



## Rubber Round Dumbbell

**Material:** Solid Steel Head Rubber Layer Wrapping  
**Available Range:** 2.5, 5, 7.5, 10, 12.5, 15, 17.5, 20, 22.5, 25, 27.5, 30, 32.5, 35, 37.5, 40, 45, 50, 55, 60 KG



**RL 1001**

## Rubber Weight Plate

**Material:** Rubber  
**Available Range:** 2.5, 5, 10, 15, 20, 25, 30 KG



**RL 1002**

## Colour Rubber Bumper Plate

**Material:** Rubber      **Plate Diameter:** 450 MM  
**Available Range:** 5, 10, 15, 20, 25 KG



**RL 1004**

## Colour Rubber Training Plate

**Material:** Steel Core, Rubber      **Plate Diameter:** 450 MM  
**Available Range:** 5, 10, 15, 20, 25 KG



**RL 1004A**

## Cast Iron Kettlebell

**Material:** Cast Iron  
**Available Range:** 2, 4, 6, 8, 10, 12, 16, 18, 20, 24, 28, 32, 36 KG



**RL 1005**

## Competition Kettlebell

**Material:** Colour Steel  
**Available Range:** 6, 8, 10, 12, 16, 20, 24, 28, 32, 36 KG



**RL 1005A**

## Vinyl Kettlebell

**Material:** Cast + Iron + Vinyl  
**Available Range:** 4, 6, 8, 10, 12, 16, 20 KG



**RL 1006**

## Olympic Barbells

**RL 1007** Cross-fit men's bar **20kg**



**RL 1007**

## Olympic Barbells

**Material:** ABS Plastic  
**Dimensions:** 50 MM



**RL 1008**

## Olympic Barbells

**Material:** Stainless Steel, ABS Plastic Grip  
**Dimensions:** 50 MM



**RL 1009**

## Olympic Barbells

**Material:** Traction Textured Rubber  
**Grip Variety:** 8



**RL 1010**

## Olympic Barbells

**Material:** Impact Grade Rubber, Sand  
**Available Range:** 1, 2, 3, 4, 5, 6, 7, 8, 9, 10, 11 KG



**RL 1011**

## Olympic Collars

**Material:** Nylon  
**Dimensions:** For 50 MM Bar  
**Weight:** 400 G



**RL 1013**

## Olympic Collars

**Material:** Steel + Rubber  
**Dimensions:** For 50 MM / 25 MM Bar  
**Weight:** 350 G



**RL 1014**

## Pull Grips

**Material:** Traction Textured Rubber  
**Packaging:** 840 X 270 X 1920 MM



**RL 1017**

## Medicine Ball

**Material:** New Rubber  
**Available Range:** 1, 2, 3, 4, 5, 6, 7, 8, 9, 10, 11 KG



**RL 1019**

## New Style Slam Ball

**Material:** PVC + Sand  
**Available Range:** 4, 8 KG



**RL 1020**

## Battle Rope With Nylon Strap

**Material:** Nylon rope, Terylene cover  
**Dimensions:** 9M x 38 MM , 9M x 5 CM



**RL 1021-A**

**RL 1021-B**

## Wall Ball

**Material:** PU + PP  
**Available Range:** 3, 5, 7 KG



**RL 1022**

## Training Sand Bag

**Material:** PVC surface, PU handles, EPE covered Rubber  
**Available Range:** 5, 10, 15, 20, KG



**RL 1023**

## Banana Bag

**Material:** PVC surface, EPE Covered Rubber bag  
**Available Range:** 5, 10, 15, 20 KG



**RL 1024**

## Gym ball

**Material:** PVC  
**Dimensions:** 650 MM, 850 MM



**RL 1025-A**  
**RL 1025-B**

## Boxing Bag

**Material:** Synthetic leather, Steel chain  
**Dimensions:** 1500 X 350 MM



**RL 1026**

## Boxing Gloves

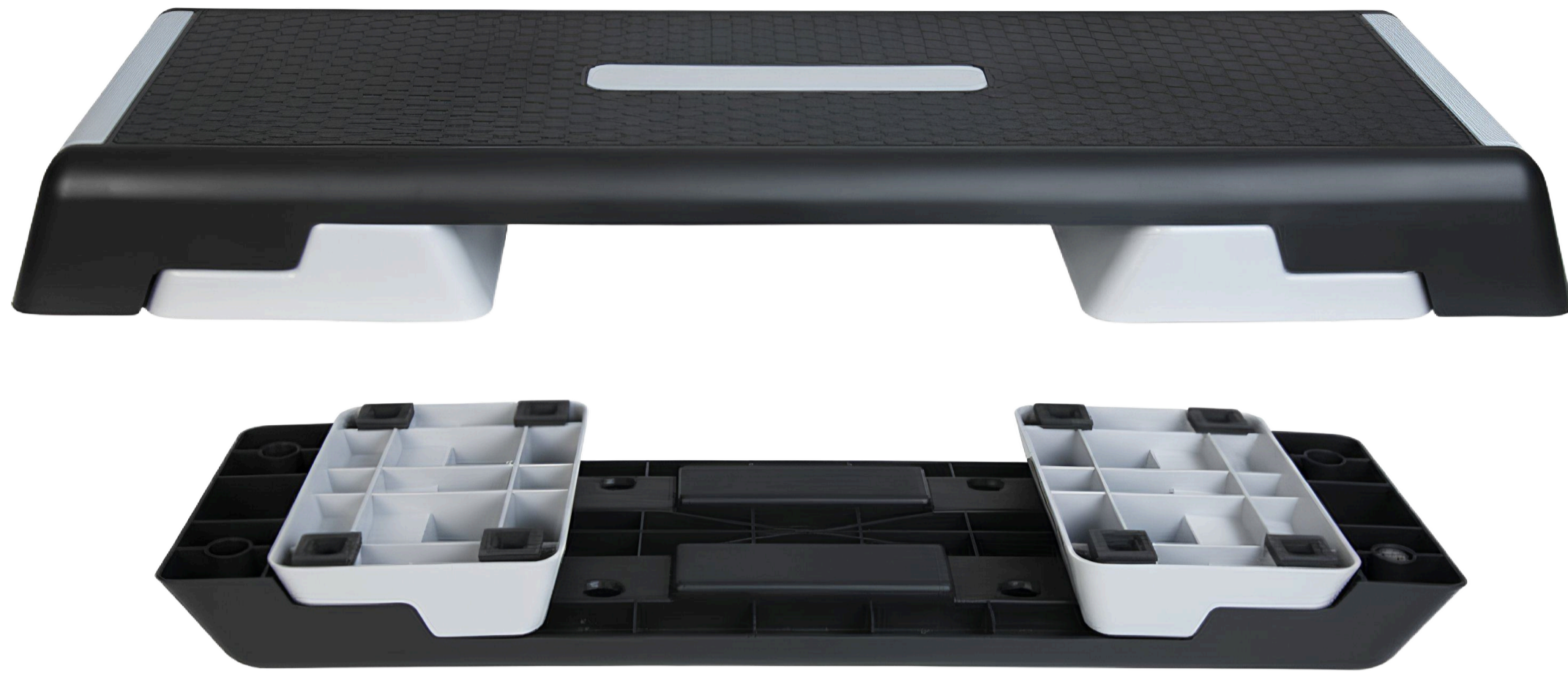
**Material:** Leather / Foam



**RL 1027**

## Aerobic Step

**Material:** High-Density Polyethylene / Non-slip Rubber Layer / Polypropylene  
**Dimensions( MM ):** 1010 L X 380 W X 150 / 200 / 250 H



**RL 1028B**

## Ploy Soft Box

**Material:** PVC + EPE, Soft leather fabric  
**Dimensions:** 50 x 60 x 75 CM



**RL 1030**

## Farmers Walk Handles

**Length:** 1400 MM  
**N. W. / G. W.** 16 / 17 KG



**RL 1031**

## Machine Accessories

**Dimensions:** Length / 140 CM



**RL 1032**

## Machine Accessories

**Dimensions:** Length / 140 CM



**RL 1033**

## Multi Grip Lat Handle

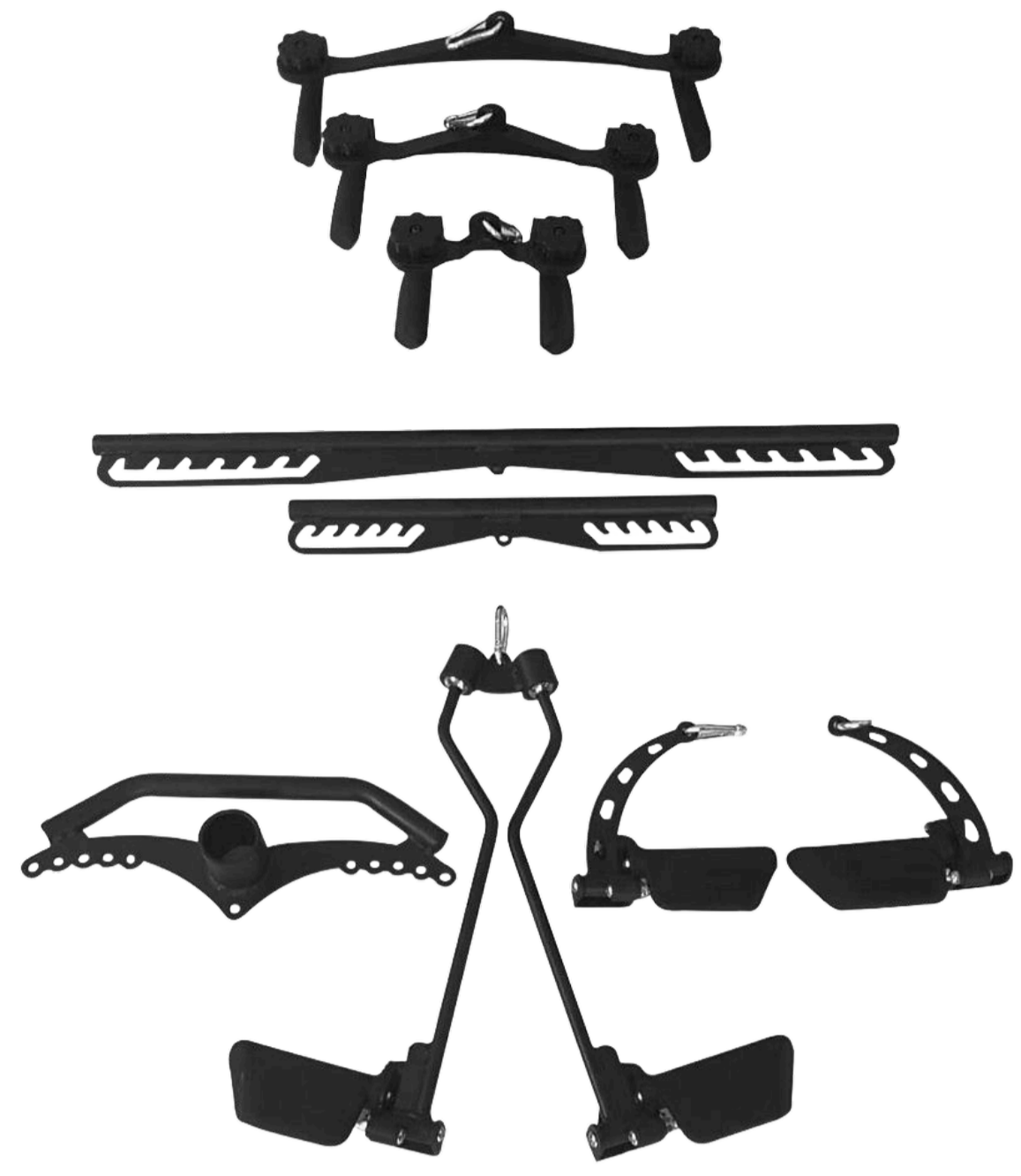
**Packaging:** 1260 X 225 X 185 MM  
**Max Load:** 350 KG



**RL 1034**

## Assembly

**Material:** PVC + EPE, Soft leather fabric  
**Packing:** 1000 X 320 X 210 MM  
**N.W. / G.W.** 24 / 25 KG



**RL 1035**

## Cable Attachment Set

**Packaging:** 840 X 270 X 190 MM



**RL 1036**

## Cable Attachment Set Rack

**Dimensions:** 370 X 402 X 203 MM  
**N.W./G.W.:** 8.4 / 9.35 KG



**RL 1037**

## Power Sled

**Material:** Q235-Gauge Steel  
**Packaging:** 860 X 500 X 1250 MM  
**N.W./G.W.** 105 / 118 KG



**RL 1038**

## Training Tire

**Dimensions:** Height / 1229 MM  
**Weight:** 40, 60 KG



**RL 1039-A**

**RL 1039-B**

## 3 in 1 Wood Plyo Box

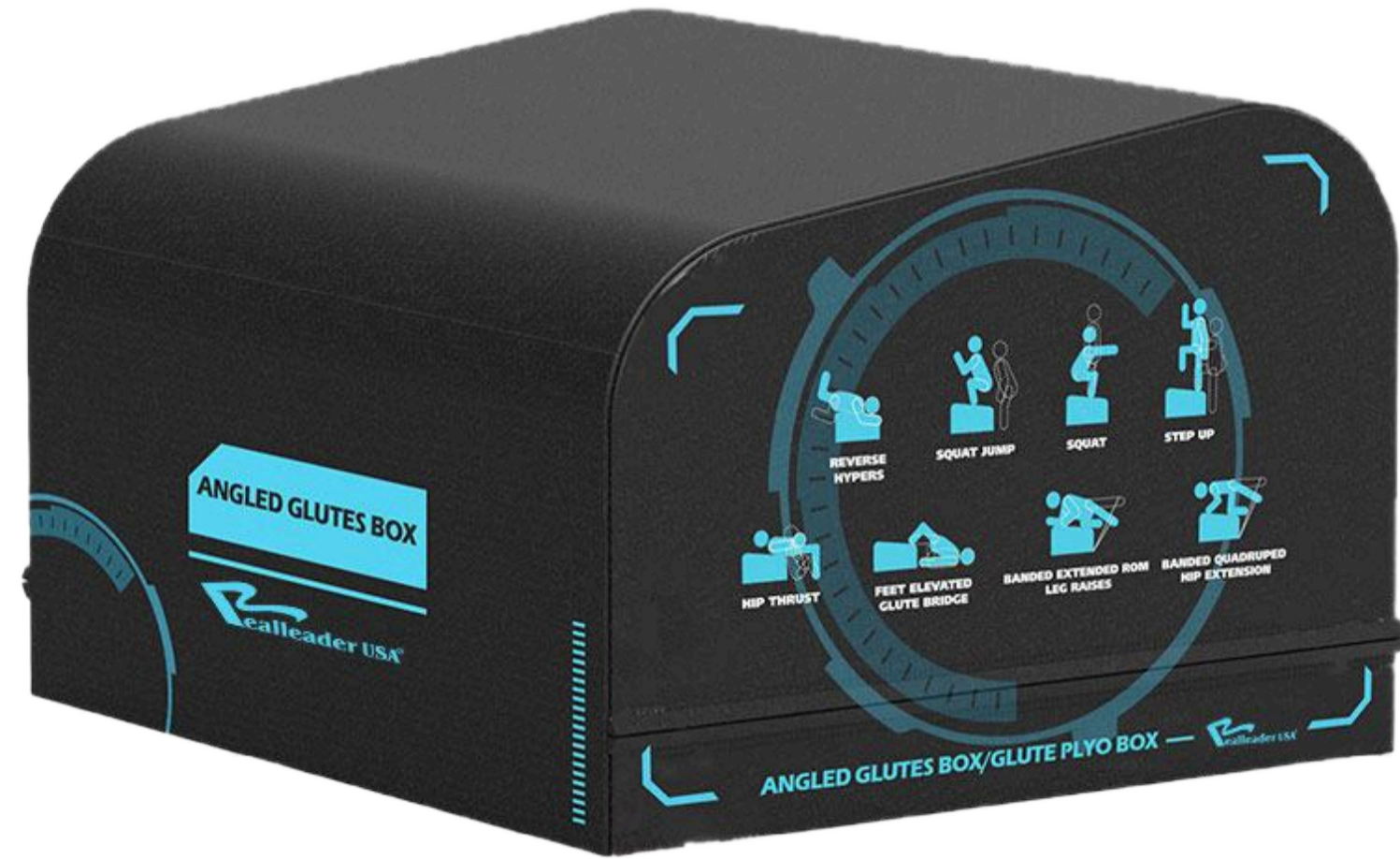
**Material:** Wood  
**Dimensions:** 50 X 60 X 75 CM



**RL 1040**

## Angled Glute Box

**Material:** Recycled Cotton / 1000D PVC  
**Dimensions:** 600 X 550 X 320 MM



**RL 1041**

## Soft Jump Box

**Material:** PVC Cover + EPE inside  
**Available Range:** 900 X 750 X 150 MM /  
900 X 750 X 300 MM /  
900 X 750 X 600 MM



**RL 1042A**

## Soft Jump Box

**Material:** 1000D PVC Covers + 130D High Elastic Foam  
**Available Range:** 90 X 75 X 15 CM / 90 X 75 X 30 CM /  
90 X 75 X 45 CM / 90 X 75 X 61 CM



**RL 1042B**

## Exercise Wheel

**Weight:** 17.5 / 18.5 Kg  
**Packaging:** 520 X 410 X 460 MM



**RL 1043**

## Bosu Ball

**Size:** 580 MM / 4600 G  
**packaging:** 600 X 600 X 120 MM



**RL 1044**

## Deadlift Bar jack

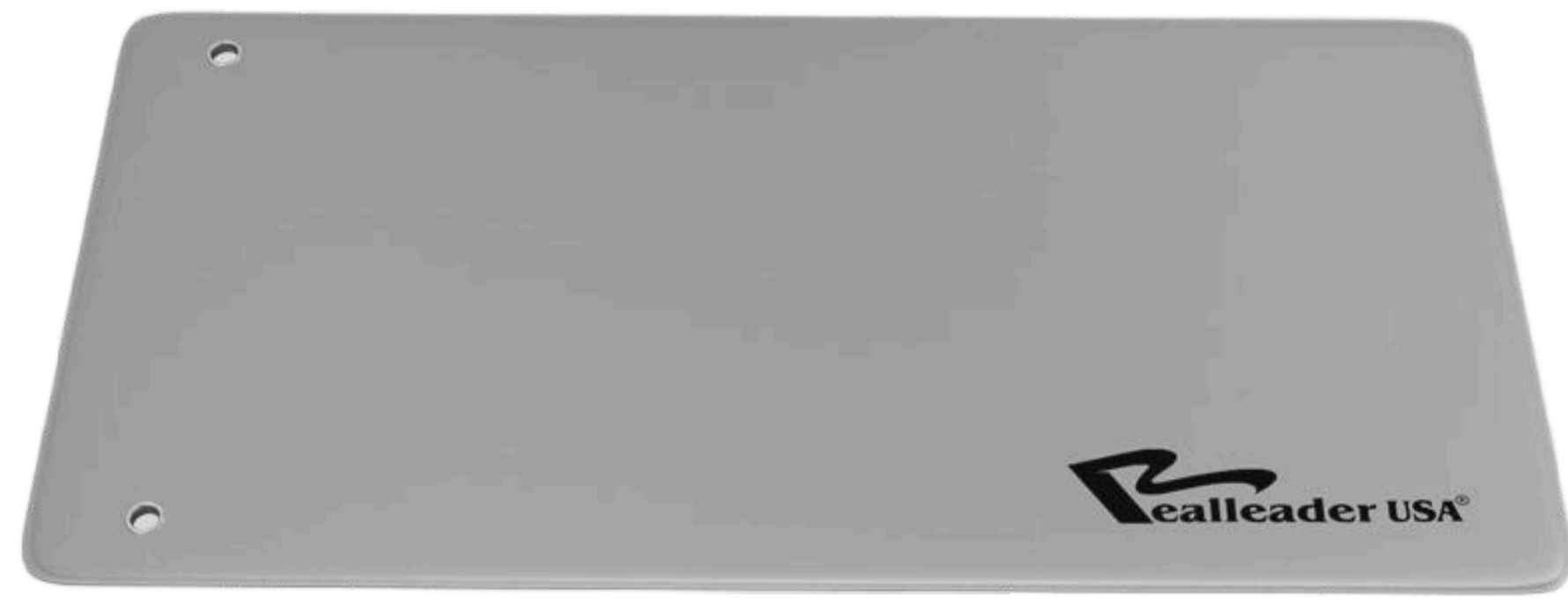
**Material:** Gauge Steel  
**Dimensions:** 1100 X 490 X 910 MM



**RL 1045**

### Exercise mat with Grommets

**Material:** Soft PVC  
**Dimensions:** 1730 X 600 X 10 MM



**RL 1046**

### 3-Fold Exercise Mat

**Material:** PVC + EPE  
**Dimensions:** 1800 X 600 X 40 MM



**RL 1047**

### Foam Mat

**Material:** EPP  
**Dimensions:** 970 X 370 X 260 MM



**RL 1048**

### Wrist West with Steel Inside

**Weight:** 20 KG



**RL 1049**

### Rubber Fixed Barbell ( Strait )

**Material:** Solid Steel Head / CPU Layer Wrapping  
**Dimensions:** 10, 15, 20, 25, 30, 35 KG



**RL 1050A**

### Rubber Fixed Barbell ( Curl )

**Material:** Solid Steel Head / CPU Layer Wrapping  
**Dimensions:** 10, 15, 20, 25, 30, 35 KG



**RL 1051A**

## Steel Squat Wedges

**Weight:** 3.5, 4 KG  
**Dimensions:** 300 X 220 X 180 MM



**RL 1052A**

## Weight Wedges Block

**Weight:** 5.5 KG  
**Dimensions:** 70 X 16 X 5 CM



**RL 1052B**

## Straps Handle

**Material:** Rubber Handle / Nylon Strap  
**N.W. / G.W.:** 14.5 , 15.5 KG



**RL 1053A**

## Water Punching Bag

**Weight:** 10, 12 KG / 35, 40 KG  
**Dimensions:** 700 X 500 X 230 MM / 700 X 500 X 240 MM



**RL 1055**

## Pull Rope Trainer

**Weight:** 6, 6.3 KG



**RL 1056**

## Jump Rope

**Size:** 3000 X 2.6 MM  
**Handle Length:** 140 MM, 110 G / Pcs



**RL 1057**

## Leather Weight Lifting Belts

**Size:**  
S - 100 X 900 MM /  
M - 100 X 1000 MM /  
L - 100 X 1100 MM



**RL 1058**

## Powerlifting Bar

**Material:** Alloy Steel  
**Dimension:** 29 X 2200 MM



**RL 1059**

## Deadlifting Bar

**Material:** High Grade Spring Steel  
**Dimensions:** 27 X 2420 MM



**RL 1060**

## Cross Fit bar - Camo Grey - Man

**Material:** Alloy Steel  
**Dimensions:** 28 X 2022 MM



**RL 1061**

## Cross Fit bar - Camo Grey - Women

**Material:** Alloy Steel  
**Dimensions:** 25 X 2010 MM



**RL 1062**



## **Into Wellness Pvt. Ltd.**

805 Supreme Headquarters,  
Mumbai-Pune-Highway, Baner, Pune -  
411045,  
Maharashtra, India

**+91-8669697773**

**+91-7720017776**

**+91-7744910050**

***[sales@intowellness.in](mailto:sales@intowellness.in)***