



## Rubber Round Dumbbell

Material: Solid Steel Head Rubber Layer Wrapping  
Available Range: 2.5, 5, 7.5, 10, 12.5, 15, 17.5, 20, 25, 27.5, 30, 32.5, 35, 37.5, 40, 45, 50, 55, 60 KG



**RL 1001**

## Rubber Weight Plate

Material: Rubber  
Available Range: 2.5, 5, 10, 15, 20, 25 KG



**RL 1002**

## Colour Rubber Bumper Plate

Material: Rubber Plate Diameter: 450 MM  
Available Range: 2.5, 5, 10, 15, 20, 25 kg



**RL 1004**

## Colour Rubber Training Plate

Material: Steel Core Rubber Plate Diameter: 450 MM  
Available Range: 5, 10, 15, 20, 25 kg



**RL 1004A**

## Cast Iron Kettlebell

Material: Cast Iron  
Available Range: 2, 4, 6, 8, 10, 12, 16, 18, 20 kg



**RL 1005**

## Competition Kettlebell

Material: Steel  
Available Range: 6, 8, 10, 12, 16, 20, 24, 28, 32, 36 kg



**RL 1005A**

## Vinyl Kettlebell

Material: Cast + Iron + Vinyl  
Available Range: 4, 6, 8, 10, 12, 16, 20 KG



**RL 1006**

## Olympic Barbells

RL 1007 Cross-fit men's bra **20kg**



**RL 1007**

## Olympic Barbells

Material: A5 Steel  
Dimensions: 50 MM



**RL 1008**

## Olympic Barbells

Material: A Steel  
Dimensions: 50 MM



**RL 1009**

## Olympic Barbells

Material: A5 Steel  
Dimensions: 50 MM



**RL 1010**

## Olympic Barbells

Material: A3 Steel  
Dimensions: 50 MM



**RL 1011**

## Olympic Collars

Material: Nylon  
Dimensions: For 50 MM Bar  
Weight: 400 G



**RL 1013**

## Olympic Collars

Material: Steel + Rubber  
Dimensions: For 50 MM / 25 MM Bar  
Weight: 350 G



**RL 1014**

## Pull Grips

Material: Traction Textured Rubber  
Packaging: 840 X 270 X 1920 MM



**RL 1017**

## Medicine Ball

Material: New Rubber



**RL 1019**

## New Style Slam Ball

Material: PVC + Sand  
Available Range: 4, 8 KG



**RL 1020**

## Battle Rope With Nylon Strap

Material: Nylon rope, Terylene Cover  
Dimensions: 9M X 38 MM, 9M X 50 MM



**RL 1021-A**

**RL 1021-B**

## Wall Ball

Material: PU + PP  
Available Range: 3, 5, 7 KG



**RL 1022**

## Training Sand Bag

Material: PVC Surface, PU handles, EPE covered Rubber  
Available Range: 5, 10, 15, 20 KG



**RL 1023**

## Banana Bag

Material: PVC Surface, EPE covered bag  
Available Range: 5, 10, 15, 20 KG



**RL 1024**

## Gym ball

Dimensions: 550 MM, 650 MM, 750 MM



**RL 1025-A**  
**RL 1025-B**

## Boxing Bag

Material: Synthetic lather, Steel chain  
Dimensions:



**RL 1026**

## Boxing Gloves

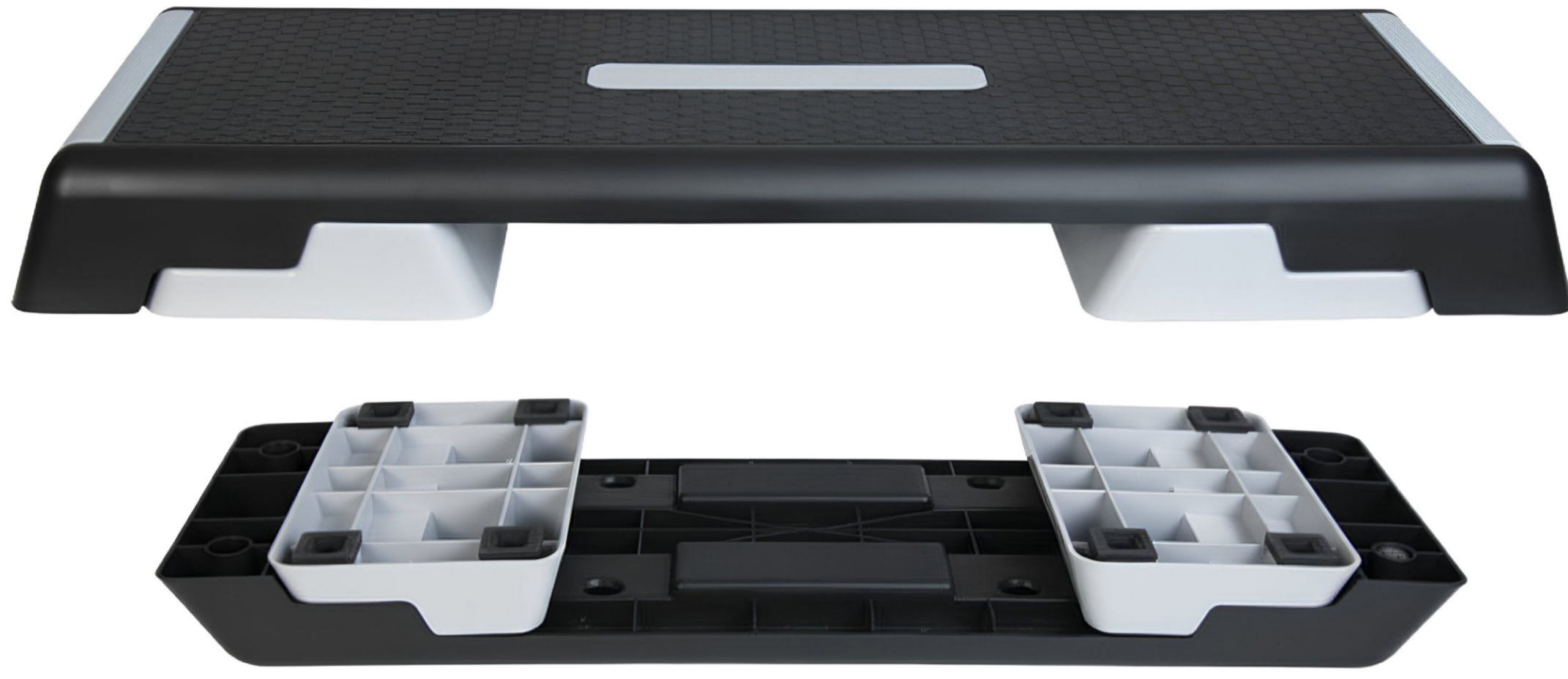
Material: Leather / Foam



**RL 1027**

## Aerobic Step

Material: High-Density Polyethylene / Non-slip Rubber Layer/ Polyethylene  
Dimensions (MM): 1010 L X 380 W X 150 / 200 / 250 H



**RL 1028B**

## Ploy Soft Box

Material: PVC + EPE, Soft leather fabric  
Dimensions (MM): 500 X 600 X 750 MM



**RL 1030**

## Farmers Walk Handles

Length: 1400 MM  
N.W. / G.W. 16 / 17 KG



**RL 1031**

## Machine Accessories

Dimensions: Length / 1400 MM



**RL 1032**

## Machine Accessories

Dimensions: Length / 1400 MM



**RL 1033**

## Multi Grip Lat Handle

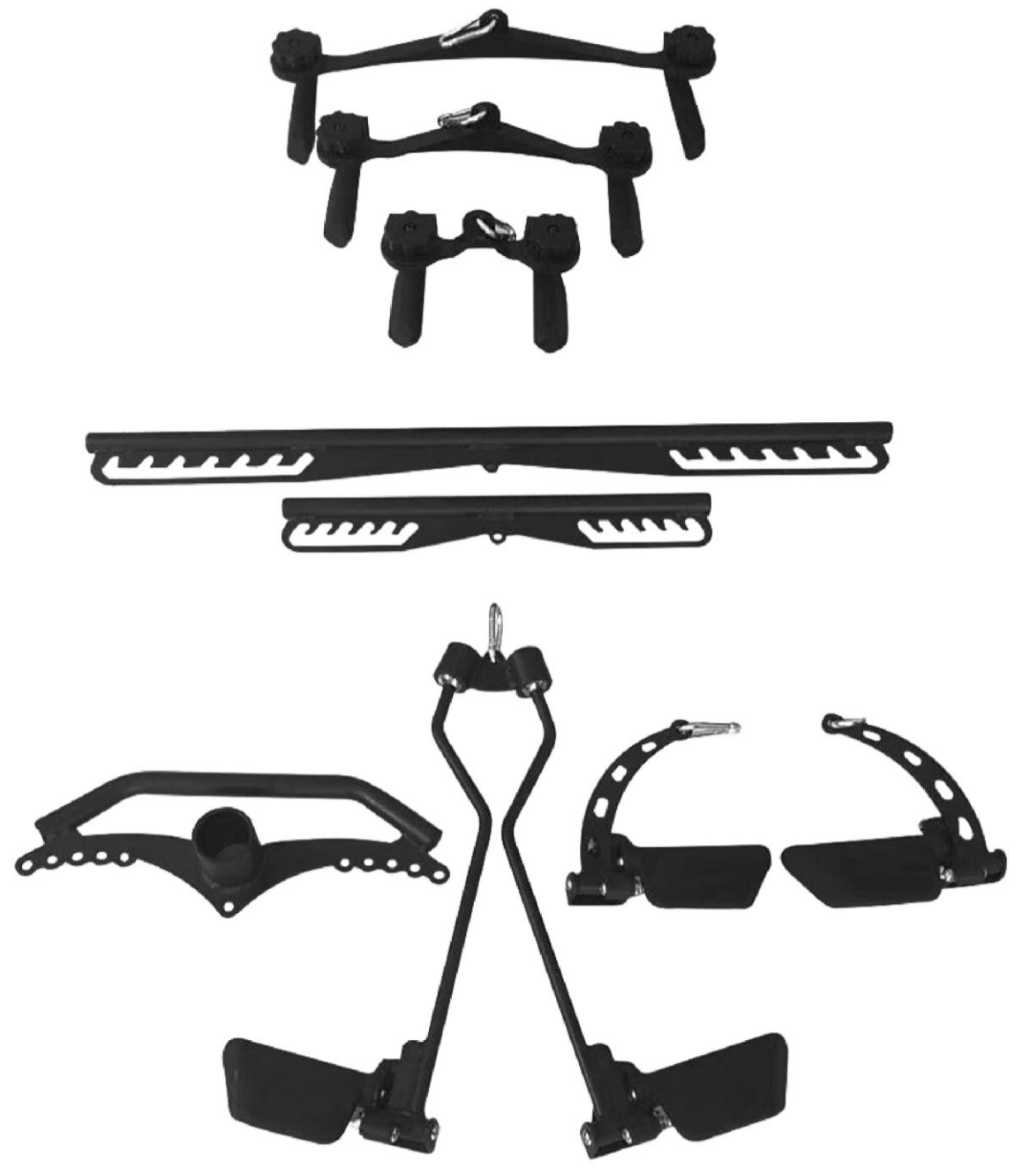
Packaging: 1260 X 225 X 185 MM  
Max Load: 350 KG



**RL 1034**

## Assembly

Material: PVC + EPE



**RL 1035**

## Cable Attachment Set

Material: PVC + EPE



**RL 1036**

## Cable Attachment Set Rack

Dimensions 370 X 402 X 203 MM  
N.W. / G.W. 8.4/ 9.35 KG



**RL 1037**

## Power Sled

Material: Q235-Gauge Steel  
Packaging: 860 X 500 X 1250 MM  
N.W. / G.W. 105 / 118 KG



**RL 1038**

## Training Tire

Weight: 40, 60 KG



**RL 1039-A**

**RL 1039-B**

## 3 in 1 Wood Plyo Box

Material: Wood  
Dimensions 500 X 600 X 750 MM



**RL 1040**

## Angled Glute Box

Material: Recycled Cotton / 1000D PVC  
Dimensions: 600 X 550 X 320 MM



**RL 1041**

## Soft Jump Box

Material: PVC COVER + EPE inside  
Available Range: 900 X 750 X 150 MM /  
900 X 750 X 300 MM /  
900 X 750 X 600 MM



**RL 1042A**

## Soft Jump Box

Material: 1000D PVC Covers + 130D High Elastic Foam



**RL 1042B**

## Exercise Wheel

Material: PVC



**RL 1043**

## Bosu Ball

Size: 580 MM / 4600 G



**RL 1044**

## Deadlift Bar jack

Material: Gauge Steel  
Dimensions: 1100 X 490 X 910 MM



**RL 1045**

### Exercise mat with Grommets

Material: Soft PVC  
Dimensions: 1730 X 600 X 10 MM



**RL 1046**

### 3-Fold Exercise Mat

Material: PVC + EPE  
Dimensions: 1800 X 600 X 40 MM



**RL 1047**

### Foam Mat

Material: EPP  
Dimensions: 970 X 370 X 260 MM



**RL 1048**

### Wrist Vest with Steel Inside

Weight: 20 KG



**RL 1049**

### Rubber Fixed Barbell ( Strait )

Material: Solid Head / Rubber Layer Wrapping  
Dimensions: 10, 15, 20, 25, 30, 35 KG



**RL 1050A**

### Rubber Fixed Barbell ( Curl )

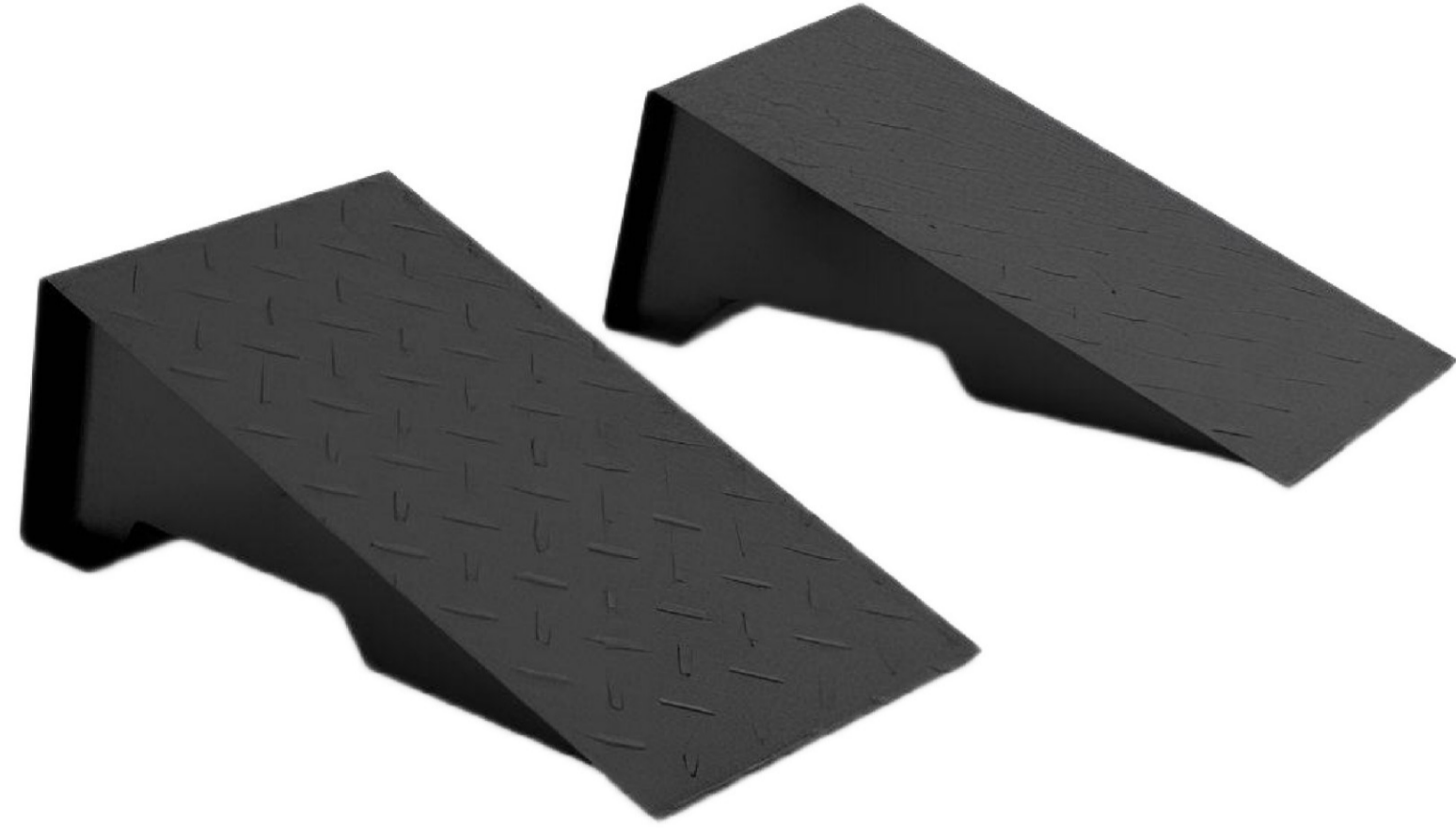
Material: Solid Head / Rubber Layer Wrapping  
Dimensions: 10, 15, 20, 25, 30, 35 KG



**RL 1051A**

## Steel Squat Wedges

Weight: 3.5, 4 KG  
Dimensions 300 X 220 X 180 MM



**RL 1052A**

## Weight Wedges Block

Weight: 5.5 KG  
Dimensions 700 X 160 X 50 MM



**RL 1052B**

## Straps Handle

Material: Rubber Handle / Nylon Strap  
N.W. / G.W.: 14.5, 15.5 KG



**RL 1053A**

## Water Punching Bag

Dimensions 700 X 500 X 230 MM / 700 X 500 X 240 MM



**RL 1055**

## Pull Rope Trainer

Weight: 6, 6.3 KG



**RL 1056**

## Jump Rope

Size: 3000X2.6 MM  
Handle Length: 140 MM, 110 G / PCS



**RL 1057**

## Leather Weight Lifting Belts

Size: S - 100 X 900 MM /  
M - 100 X 1000 MM /  
L - 100 X 1100 MM



**RL 1058**

## Powerlifting Bar

Material Alloy Steel  
Dimensions 29 X 2200 MM



**RL 1059**

## Deadlifting Bar

Material: High Grade Spring Steel  
Dimensions: 27 X 2420 MM



**RL 1060**

## Cross Fit bar - Camo Grey - Man

Material Alloy Steel  
Dimensions 28 X 2022 MM



**RL 1061**

## Cross Fit bar - Camo Grey - Women

Material Alloy Steel  
Dimensions 25 X 2010 MM



**RL 1062**



## **Into Wellness Pvt. Ltd.**

805 Supreme Headquarters,  
Mumbai-Pune-Highway, Baner, Pune -  
411045,  
Maharashtra, India

**+91-8669697773**

**+91-7720017776**

**+91-7744910050**

***sales@intowellness.in***